

Performa Edge Gutter Systems



IMETCO

4648 S. Old Peachtree Rd • Norcross, GA 30071
www.imetco.com • (800) 646-3826

© Copyright 2012, Innovative Metals Company, Inc.



IMETCO Storm-Class Gutter System

Storm Class Gutter Systems from IMETCO offer strength and curb-appeal. Available in a variety of materials and colors, IMETCO Gutter Systems can also be Kynar® post-painted to match custom colors. IMETCO's engineering team provides project-specific gutter and downspout calculations to ensure proper sizing and placement, and provides custom details incorporating the gutter system into your IMETCO metal roofing system. Robust brackets hold gutters in place even during the most extreme weather conditions, and optional heavy-duty downspout covers protect your investment from collision damage.

IMETCO Storm Class Gutter System:

- Factory-formed gutters and downspouts
- 10' standard lengths (additional lengths available)
- Available Materials
 - **Steel:** 24-, 22, and 20 gauge
 - **Aluminum:** .032" - .125"
 - **Zinc:** .027", .032", .039", .059"
 - **Copper:** 16, 20, and 24 ounce
- Pre-finished Kynar coated steel and aluminum*
- Post-painted Kynar custom colors available
- Mitered and fully welded corners, end caps, transitions, etc.
- Heavy duty, non-penetrating external brackets
- Heavy plate aluminum internal gutter straps
- 20-year finish warranty available



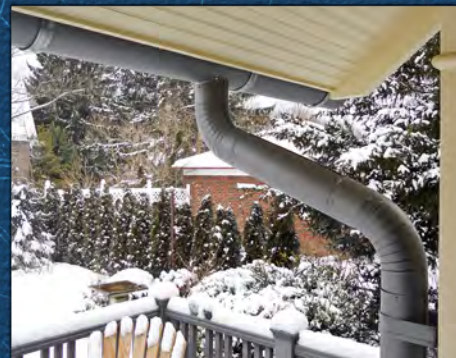
IMETCO Storm Class Downspout Cover:



This heavy duty downspout cover, which perfectly complements the Storm Class Gutter System, protects the downspout from impact damage and theft.

- Heavy gauge aluminum, up to .250"
- Slotted holes for hammer activated (drive pin) anchor fasteners
- Kynar post-painted to match
- Excellent lead times
- 10' standard length (additional lengths available)
- 20-year finish warranty available



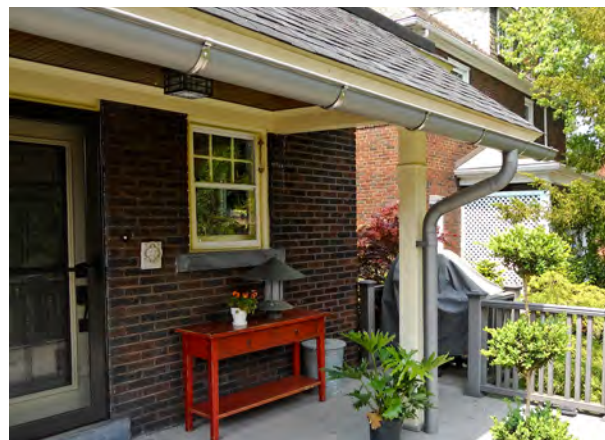
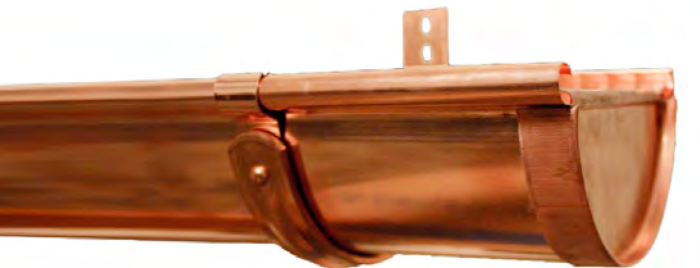


IMETCO Classic Gutter Systems

The half-round gutters, downspouts & accessories comprising IMETCO Classic Gutter Systems are available in a wide variety of materials and colors, and include everything you need to protect your building from water run-off.

- Standard gutter sizes:
 - 4", 5", 6", 7" and 8"
 - 10 and 20 foot standard lengths
- 3", 4", 5", 6", 7" and 8" round downspout options
- Gutter and downspout accessories
 - End Caps
 - Hangers
 - Outlets
 - Elbows
 - Curved DS Straps
 - Miters
- Available Materials*
 - **Zinc:** .027", .032", .039"
 - **Copper:** 16 and 20 ounce
 - **Steel:** 24 and 22 gauge
 - **Aluminum:** .032", .040", .050"

* Some restrictions apply



© Copyright 2012 | R081512

IMETCO

IMETCO's 28 standard, designer and premium colors are all "cool" colors, with SR measurements of .25 or better. Custom colors and specialty finishes are also available. Ask your IMETCO representative for more information.

Standard Collection

| | | | |
|--------------|--------------|----------------|------------------|
| Irish Mist | Almond Suede | Emerald Forest | Blue Sapphire |
| Tuscan Slate | Epic Bronze | Solar White | Cadet Gray |
| Sandstone | Chestnut | Georgian Brick | Opal Star |
| Colonial Red | Silver Cloud | Wedgewood | Weathered Copper |

Designer Collection

| | | |
|----------------|-----------------|----------------|
| Iron Mountain | Cardinal Red | Carolina Coast |
| Natural Patina | Caribbean Coral | Merlot |

Premium Collection

| | |
|-------------------------|--------------|
| Platinum Silver | Roman Copper |
| Brite Copper | Champagne |
| Prewheathered Galvalume | Galaxy Blue |

Signature Collection*



Antiqu Bronze



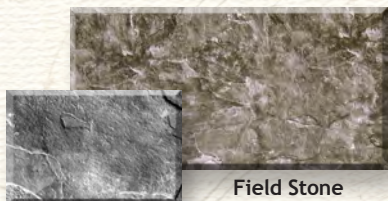
Acrylic Galvalume



Artisan Steel



Copper Patina



Field Stone

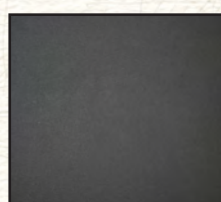


Quartz

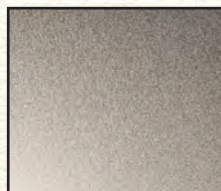
Natural/Bare Metals*



United Zinc:
Glacier Gray



United Zinc:
Onyx Black



TextureMatte™
Stainless Steel



Copper

The colors above are for reference only. To select your final color, please request a metal color sample.

*Signature and Prestige Collections are available for select products. Special conditions may apply. Contact your IMETCO representative for more information.

Galvalume® is steel pre-treatment and a registered trademark of Bieci International Inc. Hylar® is a fluorocarbon paint finish available on our metal products, and is a registered trademark of Ausimont USA Inc. Kynar® is a fluorocarbon paint finish available on our metal products, and is a registered trademark of Elf Atochem North America Inc.

FM® (Factory Mutual) is a world leader in property loss prevention and control engineering, research, and training. Its research-based recommendations set new standards that reduce the chance of property loss due to fire, weather conditions, and failure of electrical or mechanical equipment. It is a registered trademark of Factory Mutual Global, and must be identified as such whenever referred to in print.

Series 300® and all other trademarks are owned by Innovative Metals Company, Inc. (IMETCO).

The Total Solution

IMETCO, a leading manufacturer of high-quality metal products for the building envelope, goes beyond "off-the-shelf" commodity products to deliver performance-inspired systems that are tailored for each project. Our standard product line includes a full range of metal roofing, wall and edge systems and accessories that provide a wide variety of performance-assured design options. For designers who's vision goes beyond the standard product offering, IMETCO also offers high-quality custom solutions.

Our products include:

- Standing seam metal roof systems, including the Series 300® symmetrical standing seam system that offers decades of strength and beauty
- Metal wall panel systems, including a range of concealed and exposed fastener options for vertical and horizontal applications
- Evolution Complete Rainscreen Wall System, a fully-integrated rainscreen assembly under a single source warranty
- PerformaEdge ES-1 certified fascia and coping systems
- A full range of accessories, including roofing underlayments, wall membranes, and snow guards

Our product line is further distinguished by value-added services and specialty manufacturing capabilities such as curving, tapering, field-forming, and factory production of long panels. Our in-house engineering team provides project support and produces project-specific shop drawings. Project Managers work as an extension of your organization to streamline the procurement and delivery of materials to help accommodate even the most aggressive installation schedules.

The IMETCO Advantage

IMETCO is dedicated to providing high quality, performance-inspired metal products for the building envelope. We are driven by a collective desire to provide exceptional service at every opportunity. We pledge to exceed expectations with innovative solutions, dedicated support, professional engineering services, and products manufactured to the highest quality standards.

**At IMETCO, your
satisfaction is our only
measure of success!**



4648 S. Old Peachtree Rd • Norcross, GA 30071
800.646.3826 (p) • 770.908.2264 (f)

www.imetco.com