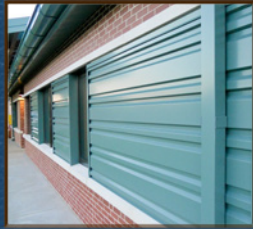


LATITUDE

WALL PANEL SYSTEMS



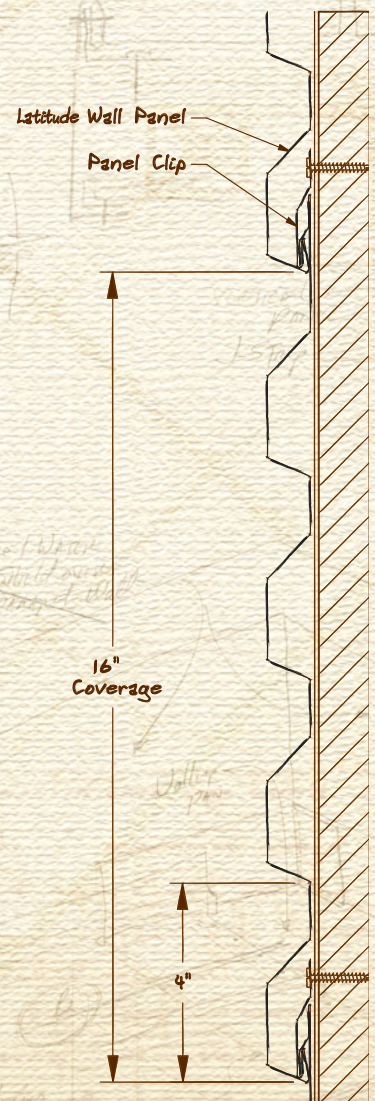
The Latitude™ Series from IMETCO is a high-performance exterior metal wall system that provides dynamic visual impact and proven resistance to wind uplift and water infiltration.

Suitable for horizontal and vertical applications, the Latitude series features concealed clips and a wide variety of profiles, materials and colors.

Latitude wall panels are manufactured to IMETCO's legendary standard of quality, and backed by unparalleled service and support.



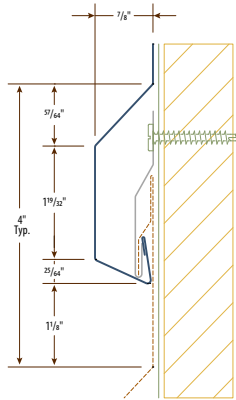
4648 S. Old Peachtree Rd • Norcross, GA 30071
www.imetco.com • (800) 646-3826





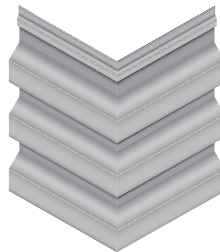
Design Characteristics

- Install horizontally or vertically
- Wide variety of profile options
- Profiles and widths can be seamlessly integrated
- Concealed, heavy-duty clips allow **unlimited thermal movement**
- Available in 12- and 16-inch coverage
- Precision Edge™ factory mitered corners available



Available Materials

- Steel: 24, 22, 20, and 18 gauge
- Aluminum: .032", .040", .050", .060"
- Zinc: 0.7mm, 0.8mm, and 1.0mm
- Copper: 16, 20, 24 ounce
- Stainless Steel: 24, 22, 20 gauge



Precision Edge™ Factory Mitered Corners

Testing and Approvals

- ASTM E-330 uniform static air pressure
- ASTM E-283 & E-331 air and water infiltration (with field-applied sealant)
- ASTM E-1886 & E-1996 missile impact & cyclic pressure
- FBC and Miami-Dade (approvals pending)

Warranties

- 20-year finish warranty
- Watertight warranty on qualifying applications

Concealed Flange Styles



Z Style

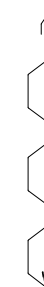
Standard profile for most applications



C Style

Alternate profile for heavy gauge materials

Standard Symmetrical 12-inch Profile



LW12S-4



LW12S-12F*



LW12S-18F

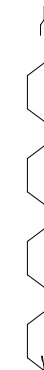


LW12S-12B



LW12S-18B

Standard Symmetrical 16-inch Profile



LW16S-4



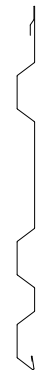
LW16S-18F*



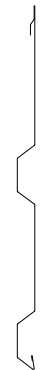
LW16S-28F*



LW16S-12F*



LW16S-18B



LW16S-28B



LW16S-12B

* Configuration available only with symmetrical profile

Optional Profile



This profile features an asymmetrical module. Like the standard profile, Latitude's optional profile is available in 12- and 16-inch widths, and a variety of configurations that can be mixed and matched if desired.

Available in **UNITED ZINC**