

PERM LOK



**IMETCO's
Perm-Lok 1.0 and 1.5
interlocking standing
seam architectural
panels offer both
strength and beauty for
high-sloped roofing
applications**

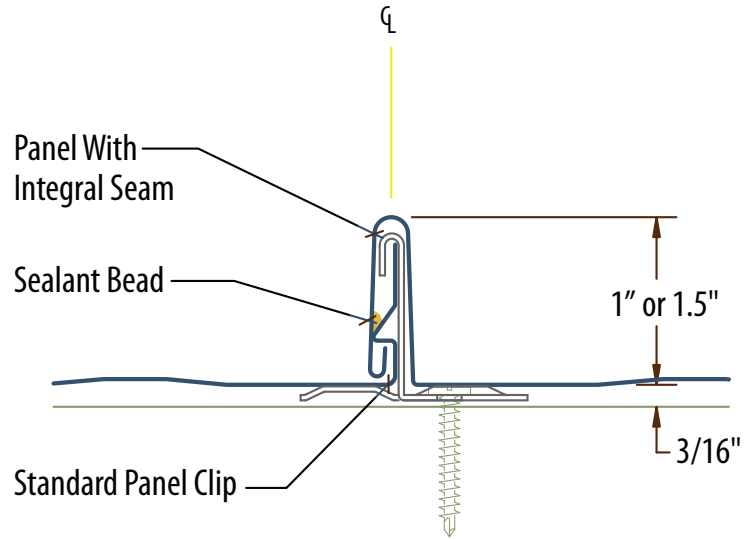


4648 South Old Peachtree Road • Norcross, Georgia 30071
www.imetco.com • (770) 908-1030 • (800) 646-3826



Design Characteristics

- Available with 1-inch or 1½-inch seam
- Interlocking standing seam; no separate cap
- Designed for use on slopes of 3:12 and above (with a solid deck and underlayment)
- Heavy concealed clips allow thermal movement
- Factory-installed seam sealant, isolated from clip
- Center of panels can be striated or flat
- Available in a variety of widths:
 - ◇ Perm-Loc 1.0: 13- and 21-inch
 - ◇ Perm-Loc 1.5: 12- and 18-inch



Materials Availability

- 22 or 24 gauge G90 galvanized steel
- 22 gauge AZ55 Galvalume®
- .032 and .040 aluminum

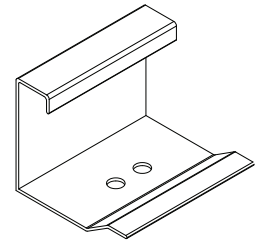
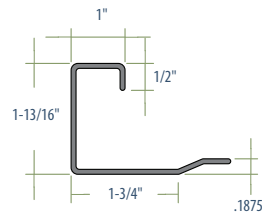
Warranties*

- 20-year finish warranty for Kynar® coating
- Materials and workmanship warranty
- Weathertight warranty on qualifying applications

* Sample warranties available upon request

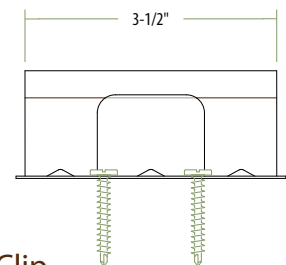
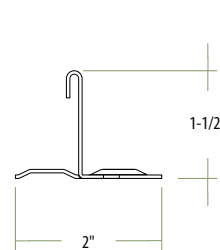
Testing

- UL-580 Class 90 windstorm rating
- ASTM E-283 air infiltration
- ASTM E-331 water penetration
- ASTM E-1592 uniform static air pressure



Gable Clip

18 Ga. Galv. Steel
18 Ga. Stainless Steel



Panel Clip

22 Ga. Galvanized Steel
22 Ga. Stainless Steel



4648 South Old Peachtree Road • Norcross, Georgia 30071
800.646.3826 (p) • 770.908.1030 (p) • 770.908.2264 (f)

www.imetco.com